

Service

Equipment

Parts



To Order Click on the Blue Part Number

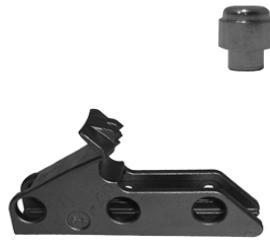
Tire Changer Jaws • Clamping Kits

TC113125C 3 Position Extended X-Clamp Kit For Coats X-Models With Adjustable Carriers. External (Outside / In) Wheel Clamping 6" - 22" Wheels

\$368.42

Kit Includes: TC 182250 Position Push Buttons (4 Pcs)
TC 184126 3 Position X-Clamp (4 Pcs)

O.E.M.	Part Number	Tire Changer
Coats	113125C	50X • 60X • 70X



TC181677 Rim Clamp / Jaw For Coats Tire Changers

\$35.70

O.E.M.	Part Number	Tire Changer
Coats	181677	5030 • 5050 • 5060 • 5065 • 5070



TC184327 24" X-Out Clamp Kit For Clamping 23" And 24" Alloy Wheels.

\$418.94

Kit Includes: TC 184268 24" X-Out Clamps (4 Pcs)
TC 182250 Position Push Buttons (4 Pcs)
TC 183604 Quilted Clamp Socks (10 Pcs)

O.E.M.	Part Number	Tire Changer
Coats	184327	50X • 60X • 70X



TC183604 Quilted Clamp Sock For Jaws And Coats Rim Clamp Tire Changers (10 Pack)

\$43.76

O.E.M.	Part Number	Tire Changer
Coats	183604	All Tire Changers Except 9010 And 9024E



Combo And Bead Lift Tools

CT768 Combo Tool Specifically Designed To Mount And Demount Tires

\$77.50

O.E.M.	Part Number	Tire Changer
Coats	000768	4040 • 4050
Hunter	RP6-1828	TC 150 • TC 2000



TI30 Large White Demount Bootie Protector For Demount End Of

1.95 ea 10 @ 1.75

CT768 Combo Tool

TI55 Small White Mount Bootie Protector For Mount End Of

1.95 ea 10 @ 1.75

CT768 Combo Tool



SHERCO AUTO SUPPLY

5431 NW 15 ST #9 Margate, FL 33063

800-548-6229 * 954-975-0012

Fax 866-548-6229 * 954-975-0052

<http://www.sherco-auto.com>

Tire Changer

Mount / Demount Duckheads

TC0343-6	Nylon Mount And Demount Duckhead (6 Pack)		
\$117.00	O.E.M.	Part Number	Tire Changer
	Hunter	RP6 0343B	TC 250 • TC 300 • TC325
	Accuturn	SM102529	All Models Except 220A



TC183061	Nylon Mount / Demount Duckhead Kit With Tapered Hole		
\$30.54	Use With Tapered Shaft 182767 Or 182812.		
	Note: Earlier 5060 Models Have A Different Vertical Bar, Change Vertical Bar In Order To Use TC 183061. If Vertical Bar Is Not Changed Use TC 250309 Duckhead Kit.		
	O.E.M.	Part Number	Tire Changer
Coats	183061	5030 • 5040 • 5050 • 5060 • 5065 6050 • 6060 • 6065 • 7050 • 7055 7060 • 7065 • 7655 • 7660 • 7665	



TC250309	Nylon Mount / Demount Duckhead Kit With Round Hole		
\$95.86	Not For Use On Hofmann 1550, 1620 And 1625.		
	<i>Note:</i> For All Tool, Cemb And Giuliano Lift The Hexagon Shaft Out And Turn 180° And Replace Shaft.		
	O.E.M.	Part Number	Tire Changer
All Tool	G2008401	All Models	
Coats	2008402	9010 • 9024	
Corghi	250309	All Models	
Hofmann	2200981	All Earlier Models Except 1550 • 1620 • 1625	



TC450310	Nylon Mount / Demount Duckhead With Round Hole		
\$59.98	For TC 250309 Duckhead Kit. <i>Duckhead Only</i>		
	O.E.M.	Part Number	Tire Changer
	All Tool	G3008403	All Models
Coats	3008403	9010 • 9024	
Corghi	450310	All Models	
Hofmann	2200981	All Earlier Models Except 1550 • 1620 • 1625	
Hunter	RP11-8314813	TCX Series	



TC14024784	Nylon Mount/Demount Duckhead Kit		
\$133.00	O.E.M.	Part Number	Tire Changer
	Accuturn	14024784	3602 • 3602HP • 4260 • 4560MR 4602 • 5602 • 5602 HP
	Hofmann	4024784	1520 • 1565 • 1620 • 1625 • 1625EM • 3300 • 3300EM
John Bean	EAA 0247G19A	EHP System IVE • IV • III • IIE	
Snap On	EAA 0247G19A	All Models	



TC20024335	Nylon Mount/Demount Duckhead For TC 14024784 Duckhead Kit. <i>Duckhead Only</i>		
\$73.94	O.E.M.	Part Number	Tire Changer
	Accuturn	20024335	3602 • 3602HP • 4260 • 4560MR 4602 • 5602 • 5602 HP
	Hofmann	024335	1520 • 1565 • 1620 • 1625 • 1625EM • 3300 • 3300EM
John Bean	EAA 0247G20A	EHP System IVE • IV • III • IIE	
Snap On	EAA 0247G20A	All Models	



Stainless Steel Duckhead Inserts

TI182961 (2pk)	Plastic Insert For TC 182788 And		
TI182963 (12pk)	TC 183429 Stainless Steel Duckheads		
\$5.50 (2 pk) \$28.14 (10 pk)	O.E.M.	Part Number	Tire Changer
	Coats	182961 / 182963	RC 1 • 5 • 10 • 15 • 20 • Early 5060



Tire Changer

Air Chucks/ Hose Assembly

EC410419 **Open End Barbed Style European Air Chuck**
\$6.22 Serrated Shank For 1/4" I.D. Hose



HA106871 **Inflator Hose Assembly With Open End Barbed Style Euro Chuck - 60" Long**
\$18.04 All Brass Connectors (1/4" I.D. - 19 BSP) Hose Includes Euro Chuck

O.E.M.	Part Number
Coats	106871



Tire Lube Supplies

TI35 **Long Tire Swab (14 1/2") Used To Lubricate Tire Beads When**
\$2.09 Removing Or Mounting Tires On Rims. Extra Long For Truck Tire

O.E.M.	Part Number
Coats	120366



TI50 **Standard Short Tire Swab (11 1/2") Used To Lubricate Tire Beads**
\$1.90 When Removing Or Mounting Tires On Rims.

O.E.M.	Part Number
Coats	491



LB106259 **Lube Bucket For Tire Changers (Straight)**
\$12.18 **O.E.M.** **Part Number** **Tire Changer**
 Coats 106259 RC 15 • 20 • 5060 • 5070



LB106572 **Lube Bucket For Tire Changers (Angled)**
\$13.08 **O.E.M.** **Part Number** **Tire Changer**
 Coats 106572 4040 • 4040SA • 4050

Wheel Balancer Accessories

TI33 **Premium Wheel Weight Hammer With Replaceable Nylon Cap**
\$22.80 **O.E.M.** **Part Number**
 Coats 113175



TI36 **Premium Wheel Weight Hammer**
\$21.85 **O.E.M.** **Part Number**
 Hunter 221-589-2



WB309011 **Wheel Caliper For Wheel Balancers.**
\$48.00 Measures Wheel Width In 1/2" And 1" Increments
O.E.M. **Part Number**
 Coats 309011
 Hunter 221563-1



Tire Repair Tools

TI65 **U.S. Made TV-2 Screwdriver Valve Core Tool For Inserting And Removing**
\$2.19 Valve Cores. Safety Grip Black And Red Screwdriver Handle.



TI73 **Heavy Duty Poly Valve Stem Inserting Lever / Valve Installation Tool**
\$13.78 Installs Tire Valves Without Scratching The Rim.
 (Screw On Type) Red



TI76 **Poly Valve Stem Inserting Lever / Valve Installation Tool**
\$10.45 Installs Tire Valves Without Scratching The Rim.
 (Screw On Type) Green



TI77 **Carbon Steel Valve Stem Puller Tool**
\$10.45 Nickel Chrome Plated To Resist Erosion (Screw On Type)



Brake Lathe

Carbide Bits

CB69	Round Positive Rake Carbide Bit		
\$55.69	O.E.M.	Part Number	
	Ammco	40610	
CB6914-10	Negative Rake Carbide Bit .030 Radius (10 Pack)		
\$26.96	O.E.M.	Part Number	Brake Lathe
	Ammco	691410	1000 • 2002 • 3000 • 4100 7000 • 7500 • 7700
CB90488	Positive Rake Carbide Bit .20 Radius 15° Angle (10 Pack)		
\$42.28	O.E.M.	Part Number	Brake Lathe
	FMC/John Bean	90488	600 • 700 Series
CB433796	Positive Rake Carbide Bit 11° Angle • 1/64" Radius (10 Pack)		
\$53.98	O.E.M.	Part Number	Brake Lathe
	Accuturn	433796	7700 • 8910 • 8911 • 8920 8922 • 8944 • 8989



Tool Holders

BH69L&R	Positive Rake Left And Right Hand Toolholder Set For Round Bits		
\$96.41	Must Use With CB69 Round Carbide Bits		
	O.E.M.	Part Number	
	Ammco	40630	
BH10701	Negative Rake Right Hand Toolholder		
\$23.90	O.E.M.	Part Number	Brake Lathe
	Ammco	10701	3000 • 4000 • 4100 7000 • 6950 Twin Cutter
BH10702	Negative Rake Left Hand Toolholder		
\$23.90	O.E.M.	Part Number	Brake Lathe
	Ammco	10702	3000 • 4000 • 4100 7000 • 6950 Twin Cutter



Brake Lathe Accessories

SB3085	Spindle Protective Boot		
\$19.90	O.E.M.	Part Number	Brake Lathe
	Ammco	3085	3000 • 4000 4100 • 7700
KB6854	Red 3 Arm Knob		
\$2.42	O.E.M.	Part Number	Brake Lathe
	Ammco	6854	3000 • 3850 • 4000 • 4100 7000 • 7500 • 7700
SG7996	Shear Gear And C Clip For Ammco Brake Lathes		
\$4.32	O.E.M.	Part Number	Brake Lathe
	Ammco	7996	3000 • 4000 • 4100 7500 • 7700
BS1	Economy 1 3/4" Drum Silencer Band - Length - 5' 8"		
\$30.52	O.E.M.	Part Number	
	Hunter	175-186-2	
BS10	Adjustable Ventilated Rotor Silencer Band		
\$24.06	O.E.M.	Part Number	
	Ammco	6920	
	Hunter	175-188-2	
	Ammco	5280	
CS1	Clip On Silencer		
\$43.90	O.E.M.	Part Number	
	Ammco	1175, 1180	

